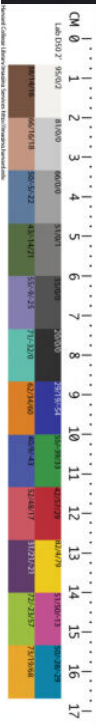


Catalogue of Rarity

美國
博物
大會
圖說

*The World's Fair
Chicago 1893
By John Hayes L.L.D.*



AN EXHIBITION OF
VALUE PRODUCTION



00:00-24:00

24.OCT.2025

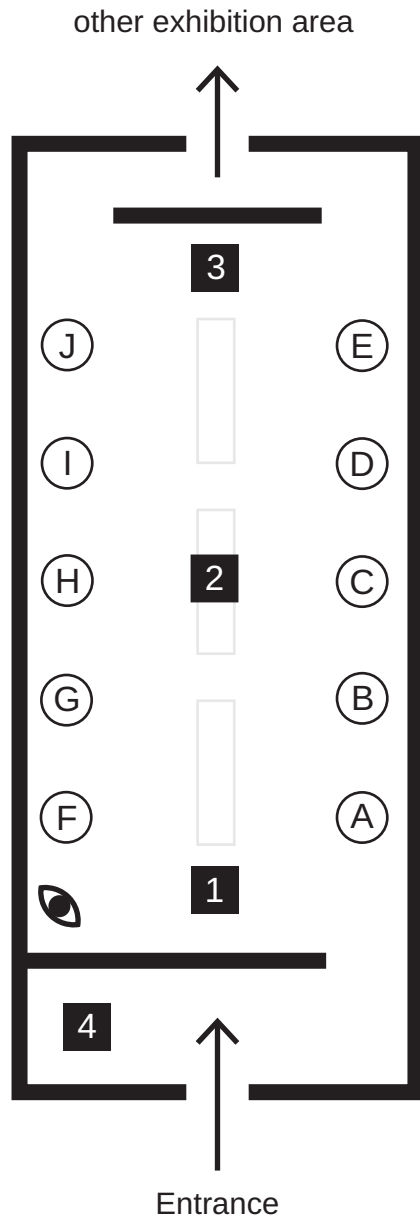
Catalogue of Rarity

Catalog of Rarity asks how value is made — and who decides what deserves to be called “rare.”

The project looks at the quiet systems that turn ordinary things into precious ones:

the glass that protects them,
the distance that separates us,
the language that sounds official.

Through this fictional exhibition, value becomes something we can observe rather than assume. It invites the viewer to sense how belief, display, and imagination work together to give meaning to things that may, in fact, say nothing at all.



Exhibition plan

- Ⓐ *Qian Miao tu shuo - bu fen juan* / 黔苗圖說·不分卷 / 1 volume, 82 leaves, 26*27cm
- Ⓑ *Miao man tu shuo* / 苗蠻圖說 / 1 volume, 82 leaves / 25*28cm
- Ⓒ *Meiguo bo wu da hui tu shuo* / 美國博物大會圖說 / 1 volume, 60 leaves / 25*16.2cm
- Ⓓ *Chu ci tu zhu* / 楚辭圖注 / 2 volume, 133 leaves / 28*16cm
- Ⓔ *Miao man tu shuo* (1891) / 苗蠻圖說 / 1 volume, 31 leaves / 34*20 cm
- Ⓕ *Miao man tu shuo* / 苗蠻圖說 / 1 volume, 48 leaves / 32*20 cm
- Ⓖ *Miao man tu shuo* / 苗蠻圖說 / 1 volume, 88 leaves / 28*16 cm
- Ⓗ *Yi ren tu shuo mu lu* / 夷人圖說目錄 / 2 volume, 112 leaves / 44*22 cm
- Ⓘ *Qian miao tu shuo* / 黔苗圖說 / 2 volume, 118 leaves / 31*20 cm
- ⓰ *Dian miao tu shuo* / 滇苗圖說 / 2 volume, 90 leaves / 41*25 cm

1 Exhibition statement

4 Locker room

2 Exhibition brochure

👁 Museum attendance

3 Sensory Imagination Assessment info



Sensory Imagination Assessment

Sensory Imagination Assessment (SIA) is an independent institution dedicated to evaluating the sensory qualities of rare and collectible objects. Using a standardized grading system, SIA provides reliable scores for three categories — Touch, Smell, and Taste — to recognize and preserve each object's sensory value.

Exceptional Sensory Realism **SIA 10**

The image creates an immediate and lifelike sensory impression. Viewers can easily imagine the temperature, texture, and smell of the material. Each visual cue translates directly into tactile or olfactory imagination, producing a near-physical reaction. The photograph almost replaces the need for physical contact.

Stable Sensory Presence **SIA 7.5 / 7.0 / 6.5 / 6.0**

The image maintains a moderate level of sensory stimulation. While the tactile and olfactory imagination is accessible, it remains steady and calm. Aging marks and tonal variations contribute to a composed, documentary quality that still invites sensory reading.

Limited Sensory Cue **SIA 4.0 / 3.5 / 3.0**

The photograph provides minimal sensory information. Surfaces appear flattened or overly uniform, and details that normally suggest tactility are lost. The viewer perceives the book primarily as an image rather than a physical object.

Strong Sensory Projection **SIA 9.0 / 8.5 / 8.0 / 7.5**

Sensory imagination arises clearly and coherently. The image offers enough visual and tonal information to support detailed associations—paper fibers, ink tone, and surface wear are all legible. The viewer experiences a confident sense of material reality without exaggeration.

Partial Sensory Suggestion **SIA 5.5 / 5.0 / 4.5**

Only certain sensory dimensions (such as texture or weight) are effectively suggested. Other impressions—like smell or temperature—are faint or ambiguous. The image functions more as visual evidence than as a multisensory prompt, leaving interpretive space for imagination.

Minimal Sensory Response **SIA 2.5 / 2.0 / 1.5 / 1.0**

The image remains purely informational, evoking almost no sensory imagination. Lighting, focus, or framing reduce material cues, resulting in a detached, archival tone. The photograph communicates data, not texture.

Qian Miao tu shuo - bu fen juan

黔苗圖說，不分卷

990089863330203941

SIA **7.0**

1 volume, 82 leaves / Date:
26*27cm / between 1736-1911

The paper covers release a mild scent of aged fiber and faint ink residue. The smell is dry and neutral, suggesting long-term storage rather than recent handling. The surface feels slightly rough with visible grain, the fibers moderately compacted and uneven to the touch. Page edges are firm, producing a restrained rustling sound when turned. In taste association, it would resemble unsweetened tea — thin, mineral, and faintly astringent.

Overall, the book conveys a quiet material stability, showing age without fragility.



Smell: 6.8 / 10	Average: 7.0 / 10
Touch: 7.3 / 10	
Taste: 6.9 / 10	

SIA Grade: SIA-8 — Stable Sensory Presence

SIA
Grading Standard™



Miao man tu shuo

苗蠻圖說

990089863390203941

SIA **8.0**

1 volume, 82 leaves / Date:
25*28cm / between 1736-1911

The dark brown cover shows a polished, wood-like surface with subtle circular patterns and faint scratches. Its look suggests a mild scent of resin and aged varnish—warm, dry, and slightly metallic at the edges. The surface seems smooth but with shallow ridges that could offer soft resistance under touch, similar to polished wood that has absorbed time and handling. The imagined taste would be faintly bitter, like dry bark or old tea leaves, carrying a trace of dust.

Overall, the image can strongly awaken sensory memory—the shine, color depth, and grain variation together suggest warmth, texture, and a quiet sense of touch.



Smell: 7.0 / 10
Touch: 8.5 / 10
Taste: 8.5 / 10

Average: 8.0 / 10

SIA Grade: SIA-8 — Strong Sensory Projection

SIA
Grading Standard™



Meiguo bo wu da hui tu shuo

美國博物大會圖說

990094323650203941

SIA **7.5**

1 volume, 60 leaves / Date:
25*16.2cm / 1892

The yellow cover looks dry and slightly rough, with soft edges and small tears that show its age. It seems to carry a light smell of old paper mixed with dust and faint ink from the red label—dry, thin, and a little sharp. The surface appears firm but not smooth, like handmade paper that has slowly lost its tension. If imagined as a taste, it would be like starch or dry rice paper, plain and powdery.

Overall, the image can gently awaken the viewer's senses—the color, wear, and small details together suggest the quiet texture and scent of time.

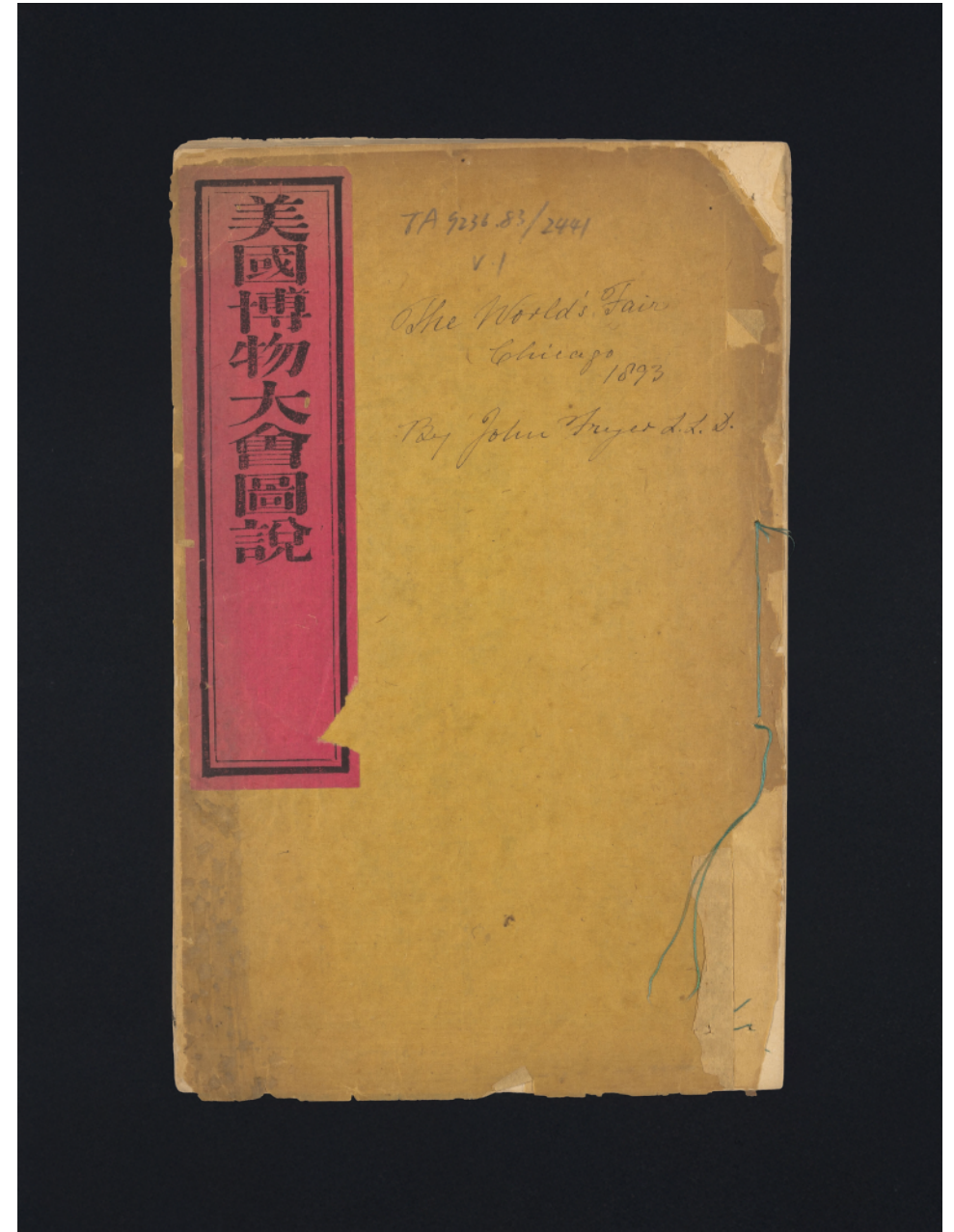


Smell: 7.6 / 10
Touch: 7.8 / 10
Taste: 7.3 / 10

Average: 7.5 / 10

SIA Grade: SIA-8 — Strong Sensory Projection

SIA
Grading Standard™



Chu ci tu zhu

楚辭圖注

990089863330203941

SIA **5.0**

2 volume, 133 leaves / Date:
28*16 cm / 1645

The dark blue cover shows a dense, fabric-like surface with faint vertical threads visible under light. The imagined scent is muted, a mix of clean textile and faded ink, suggesting careful storage and little exposure to dust. The surface appears cool and dry, with a smooth tension that resists touch like starched cloth. When translated into taste, it recalls clear mineral water or thin paper ash—light, neutral, and short on flavour.

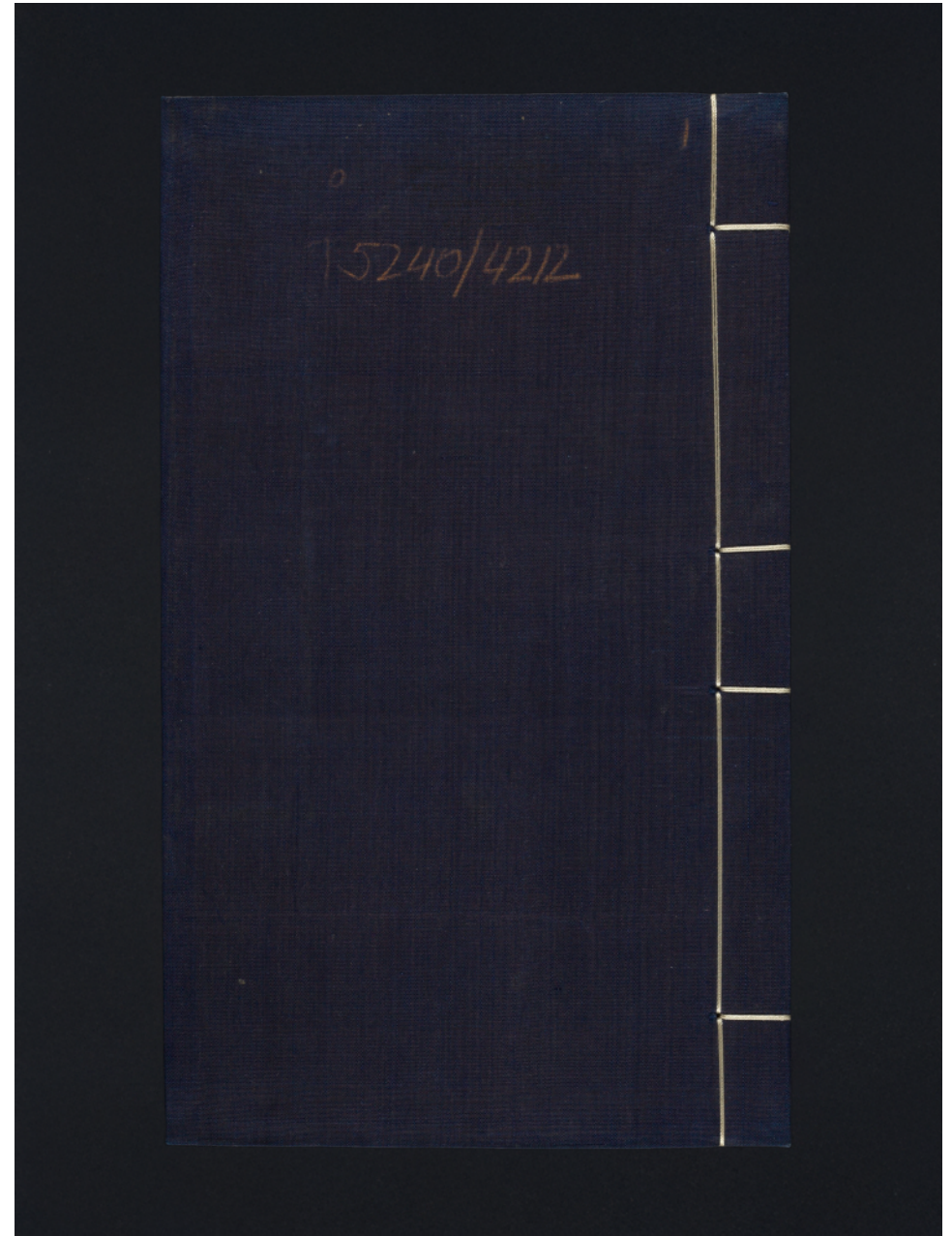
Overall, the image offers limited sensory engagement. Its uniform tone and minimal detail reduce the viewer's ability to imagine texture, smell, or taste, leaving a distant and almost silent impression.



Smell: 6.5 / 10	Average: 5.0 / 10
Touch: 5.0 / 10	
Taste: 3.5 / 10	

SIA Grade: SIA-5 — Partial Sensory Suggestion

SIA
Grading Standard™



Miao man tu shuo

苗蠻圖說

990089863530203941

SIA **4.0**

1 volume, 31 leaves / Date:
34*20 cm / 1891

The blue cover looks heavy and slightly damp in tone, as if it once absorbed moisture and then dried unevenly. The imagined smell is faintly sour, a mix of cloth, dust, and leftover adhesive—something between storage air and forgotten fabric. The surface appears dull with soft dents, the texture no longer tight but sagging slightly like worn canvas. In taste association, it recalls thin paste or wet paper, leaving a trace of bitterness on the tongue.

Overall, the image gives only a weak sensory impression; it recalls the weight of old material more than its presence, awakening memory through absence rather than vividness.



Smell: 4.5 / 10
Touch: 4.0 / 10
Taste: 3.5 / 10

Average: 4.0 / 10

SIA Grade: SIA-4 — Limited Sensory Cue

SIA
Grading Standard™



Miao man tu shuo

苗蠻圖說

990089863430203941

SIA **2.5**

1 volume, 48 leaves / Date:
32*20 cm / between 1736-1911

The dark brown cover shows little variation in tone, its surface flat and uniform with only faint scratches. The imagined smell is almost absent—no clear trace of wood, oil, or dust, only a dry and neutral air. The texture appears smooth and closed, offering no sense of depth or grain to touch. In taste association, it might resemble plain wax or clean paper, leaving no residue or aftertaste.

Overall, the image gives minimal sensory response; its stillness and lack of texture make it difficult to imagine smell, touch, or taste, leaving perception nearly dormant.



Smell: 4.0 / 10
Touch: 2.0 / 10
Taste: 1.0 / 10

Average: 2.5 / 10

SIA Grade: SIA-2.5 — Minimal Sensory Response

SIA
Grading Standard™



Miao man tu shuo

苗蠻圖說

990089863330203941

SIA **3.5**

1 volume, 88 leaves / Date:
28*16 cm / between 1736-1911

The wooden cover shows uneven color and small areas of peeling paint, where the bright orange strip contrasts sharply with the dark surface. The imagined smell is faintly chemical—old varnish mixed with dry pigment and a trace of dust. The texture appears flat but irregular, with thin cracks that might catch slightly under the fingers. In taste association, it could resemble metal dust or dry resin, leaving a dull bitterness.

Overall, the image gives a weak but specific sensory impression; the orange mark adds a hint of sharpness, yet the rest of the surface remains still and closed, awakening the senses only slightly.



Smell: 4.5 / 10
Touch: 3.5 / 10
Taste: 2.5 / 10

Average: 3.5 / 10

SIA Grade: SIA-8 — Limited Sensory Cue

SIA
Grading Standard™



Yi ren tu shuo mu lu

夷人圖說目錄

990091358430203941

SIA **6.0**

2 volume, 112 leaves / Date:
44*22 cm / between 1736-1911

The brown cover shows steady wear with thin vertical lines and a partially torn title label. The imagined scent mixes dry wood and old paper paste, slightly sweetened by the residue of ink—aged but still breathable. The surface looks smooth but with shallow grooves, giving the sense of coolness and a faint drag when touched. In taste association, it might recall thin layers of starch or wood pulp, mild with a trace of dust.

Overall, the image offers a moderate sensory response; its marks and label remnants provide enough variation to awaken perception, though the feeling remains calm and contained.



Smell: 6.0 / 10	Average: 6.0 / 10
Touch: 7.0 / 10	
Taste: 5.5 / 10	

SIA Grade: SIA-6 — Stable Sensory Presence

SIA
Grading Standard™

Qian Miao tu shuo

黔苗圖說

990091358430203941

SIA **9.5**

2 volume, 118 leaves / Date:
31*20cm / between 1736-1911

The patterned cover shows rich depth in its woven texture, where dark green and bronze tones shift softly across the surface. The imagined scent is vivid—aged silk mixed with wood dust and faint ink, warm and layered like fabric stored beside paper. The tactile impression feels alive: the surface alternates between smooth ridges and softened hollows, giving both resistance and warmth to the hand. In taste association, it recalls tea leaves dried in sunlight—earthy, bitter at first, then faintly sweet.

Overall, the image fully awakens the senses; its color, texture, and subtle irregularities create a complete and convincing material presence, inviting a near-physical response.



Smell: 9.0 / 10
Touch: 10 / 10
Taste: 9.5 / 10

Average: 9.5 / 10

SIA Grade: SIA-9.5 — Exceptional Sensory Realism

SIA
Grading Standard™



Dian miao tu shuo

滇苗圖說

990089863670203941

SIA **1.5**

2 volume, 90 leaves / Date:
41*25 cm / between 1821-1911

The fabric cover appears faded and thin, its floral pattern nearly dissolved into the background. The imagined smell is flat and unclear—neither paper nor cloth, only the faint air of age without trace of fiber or dust. The surface looks soft but lifeless, lacking texture or resistance, as if the material had lost its weight. In taste association, it might resemble plain cloth or stale air—neutral and quickly disappearing.

Overall, the image fails to awaken the senses; its colors and surface feel distant, offering almost no cues for smell, touch, or taste, leaving only a quiet visual record.



Smell: 1.5 / 10
Touch: 2.0 / 10
Taste: 1.0 / 10

Average: 1.5 / 10

SIA Grade: SIA-1.5 — Minimal Sensory Response

SIA
Grading Standard™



Catalogue of Rarity

